

# Productive SolidCAM

## »We must be at the front end«

BS Plastic A/S is one of the pioneers in plastic manufacturing in Denmark. In 1958 Steen Simonsons' father started the company in Risskov near Aarhus and the company was 100% craftsman oriented until the 1990`s. BS Plastic supplies plastic parts in series from 5 to 500 to a variety of premium manufacturing companies ranging from film machinery producers to windmill factories.

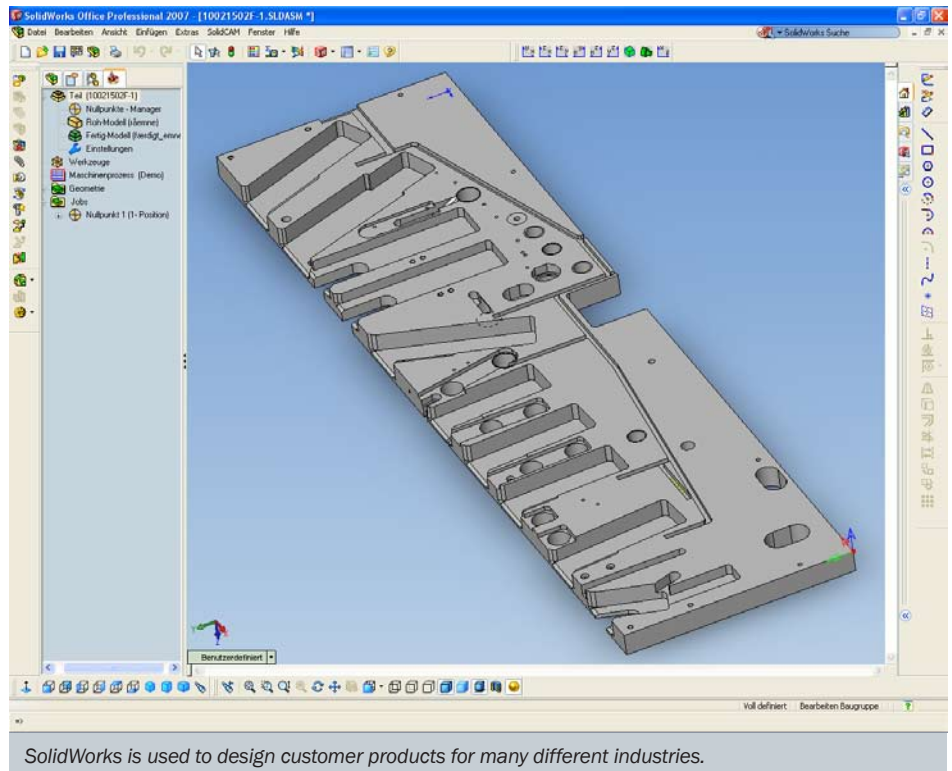
It was almost a revolution when in 2004 BS Plastic bought their first CNC controlled vertical milling center to enhance its production capabilities.

»It was a giant step for us and so many things have happened since then« explains managing director Steen Simonsen, who since has increased the number of machines eightfold, a very essential development for the company.

»Flexibility is the keyword in our organisation. We have to be very fast in changing from one job to the next, because our survival is depending on the small series of parts« Steen Simonsen continues. Therefore the flexibility was an important factor when he invested in a top modern production line.



Managing director and owner of BS Plastic, Steen Simonsen is very satisfied with the much more flexible production which the company has gained after moving to SolidCAM.



SolidWorks is used to design customer products for many different industries.

Together with the CNC controlled vertical milling machines, BS Plastic A/S also invested in the SolidCAM software. The results of this investment has had a direct positive effect on the company's profitability. Programming time has in some cases been reduced to a tenth, and where a complicated part in the past could have taken more than a week to produce, it can now be done in less than one day.

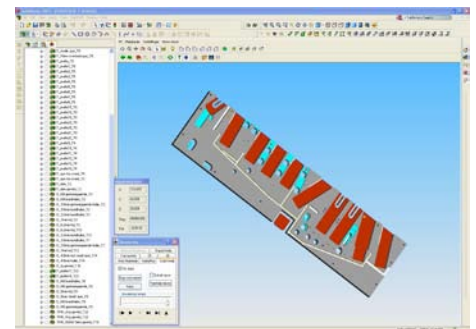
### High software requirements

»SolidCAM is easy and fast to use, and has minimized the time it takes from receiving a 3D model file from a customer till we start producing the part« Steen Simonsen states. On top of this it is very easy and cheap to change the setup if needed.

»Technically we have to be in the front, but at the same time we require our software to be easy to comprehend and fast to use

and work with« Steen Simonsen says, after having experienced his employees being able to use the software after only 3 days of training from the reseller.

Despite the current trend that many companies are moving their production to countries where the costs are lower, he prefers to continue the production in Risskov.



SolidCAM, fully integrated in SolidWorks quickly generates from the SolidWorks model a ready-to-go CNC program, which the machines use for milling the mold for the plastic part.

»Our know-how is so large that we can complete the products in house and with our software the machines are doing most of the work« the director says, fully convinced that outsourcing is not an idea for BS Plastic A/S.

The fact that SolidCAM is meeting the demand of simplicity can be vouched for by CNC programmer Kim Herstal. He has 27 years of experience with CNC-programming and every day he sees the difference between SolidCAM and the previously used programming methods.

### Easy and more effective

»It is a giant relief that SolidCAM is fully integrated in SolidWorks. We are now able to machine a 3D model and have it working the first time. We see the part and the machining simulation on the computer screen and can rely on it working on the CNC machine the

first time we run it.« Kim Herstal continues that SolidCAM is easier and more effective than its competitors. The simulation tools in SolidCAM are extremely powerful and therefore there is no doubt that the part will be milled exactly as shown on the screen.

»It is impressive to see how an advanced 3D model is easily transformed into a 10.000 lines NC program which can be run directly on the machine,« the experienced programmer says. Kim Herstal is in close dialog with SolidCAM's Danish subsidiary which supports him closely. His suggestions for improvement have been realised; for example BS Plastic requested special functions related to thread milling that have now been implemented in SolidCAM. This co-operation is an ongoing process and SolidCAM manager Bo Pedersen is frequently visiting the plastics part manufacturer to provide ongoing support and technical assistance.



SolidCAM drives BS Plastic's four vertical milling centres, two lathes and two sheet metal milling machines. These CNC controlled machines manufacture 70-80 percent of BS Plastic's production.



Production manager and CNC programmer Kim Herstal is in close cooperation with SolidCAM's Danish subsidiary for the benefit of both partners.

## BS Plastic A/S

BS Plastic A/S supplies plastic parts in volumes from 5 to 500 to premium manufacturing companies ranging from film machinery makers to wind-mill factories. The efficient manufacturing of parts is done in a modern shop floor that includes four vertical milling centres, two turning machines and two sheet metal milling machines. The machines are working 24 hours a day, and are producing 70 to 80 percent of the company's output. For the programming of the CNC machining centers BS Plastic successfully utilizes the integrated manufacturing solution "SolidWorks+SolidCAM".

[www.bs-plastic.dk](http://www.bs-plastic.dk)

## SolidCAM

Founded in 1984 by its Managing director Dr. Emil Somekh, SolidCAM provides manufacturing customers with a full suite of CAM software modules for 2.5D and 3D Milling, High-Speed Machining, Multi-sided Indexial 4/5 axes Milling, Simultaneous 5 axes Milling, Turning, Turn-Mill up to 5-axes and WireEDM. SolidCAM has the Certified Gold-product status from SolidWorks and provides seamless, single-window integration and full associativity to the SolidWorks design model including parts, assemblies and configurations. SolidCAM has today more than 12,000 seats installed. SolidCAM is sold by a worldwide reseller network in 46 countries. SolidCAM has been on a very rapid growth path since it implemented the SolidWorks integration strategy. In the CIMdata NC Software Market Assessment Report, CIMdata named SolidCAM as the worldwide fastest growing CAM vendor in 2003, 2004 and 2005 with revenue growth rates of +39.4 percent, +51.1 percent and +40%.

[www.solidcam.com](http://www.solidcam.com)

# SolidCAM

